



# MARK-10 MGT

- **BI-DIRECTION:** CW & CCW
- **CAPACITIES:** 100 lbf-in/1150 kgf-mm
- **SELECTABLE:** lbf-in/kgf-mm/N-cm
- **REMOTE HAND-HELD SENSOR**
- **ACCURACY:** ± 0.5%



**MGT**  
Economy Torque Gauge

The **MGT Digital Torque Gauge** provides **basic torque measuring** with a wide range of capacities at an economical price where added features are unnecessary.

MGT basic features include **hand-held or fixed remote torque sensor** use, selectable pound, ounce, kilogram or Newton units, push button zero, peak memory hold and auto-off for battery power conservation.

The AC power adapter provides continuous power with a non-rechargeable battery for back-up or for portable use.

### CONSTRUCTION

- Compact, lightweight and rugged aluminum housing.
- Bi-directional hand-held or mounted remote torque sensor.
- Remote torque sensor accommodates up to 1/2" [13 mm] diameter sample.
- Display module and remote sensor connected with 5' [125 mm] coiled cable.

### OPERATION

- Peak torque sampling rate: 30/sec.
- Peak hold retains maximum clockwise and counter-clockwise readings.
- Selectable units: ozf-in, lbf-in, kgf-mm, or N-cm.
- Simple push-button calibration procedure.
- Continuous operation with 110 or 220 Vac adapter.

### POWER REQUIREMENTS

- Non-rechargeable battery provides 30 hours of operation.
- "Lo Bat" display warns of low battery.
- Auto-off conserves battery power.

### ACCESSORIES

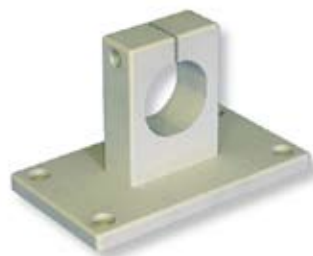
- Included: non-rechargeable alkaline battery, AC adapter, case, manual and NIST Calibration Certificate.

### ACCURACY

- ±0.5% of full scale ±1 least significant digit.

### WEIGHT & DIMENSIONS

- 2 lb. [1 kg] Shipping weight - 3 lb. [14 kg]
- 3.8" [97 mm] H x 2.5" [64 mm] W x 1.5" [38 mm] D.



**AC 1007**  
Bench Top Sensor Mount

MODEL	CAPACITY/GRADUATION			PRICE
MGT 10Z	10 x 0.01 ozf-in	7 x 0.005 kgf-mm	7 x 0.005 N-cm	\$1,175
MGT 20Z	20 x 0.02 ozf-in	14 x 0.01 kgf-mm	14 x 0.01 N-cm	1,175
MGT 50Z	50 x 0.05 ozf-in	36 x 0.05 kgf-mm	35 x 0.05 N-cm	1,175
MGT 12	12 x 0.01 lbf-in	140 x 0.1 kgf-mm	135 x 0.1 N-cm	1,075
MGT 50	50 x 0.05 lbf-in	580 x 0.5 kgf-mm	570 x 0.5 N-cm	1,075
MGT 100	100 x 0.1 lbf-in	1150 x 1 kgf-mm	1150 x 1 N-cm	1,075

MODEL	ACCESSORIES	PRICE
AC 1007	Mounting, Bench Top, Remote Sensor	\$90

Prices and specifications are subject to change without notice.

**CALL US TOLL FREE 800-345-4188**

